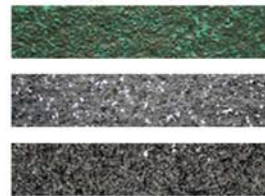


20 Series

Trunk Spatter



Description:

Zolatone Trunk Spatter paint gives a speckled finish to any trunk interior. This spatter finish will make your trunk look brand new while protecting it at the same time. Zolatone Trunk Spatter covers blemishes, gouges, and abrasions and restores trunk interiors to an almost new finish.

Features:

- Quick Coverage
- Excellent Adhesion
- Variety of Colors

Advantages:

- Substrate Versatility
- Extremely Durable
- V.O.C. Compliant

Benefits:

- No Special Maintenance
- Saves Time and Money
- Multi-Use Coating

ZOLATONE®

Professional Grade Products

Trunk Spatter

Speckled Finish



About Zolatone Trunk Spatter

Zolatone 20 Series Trunk Spatter is a polychromatic, modified nitrocellulose coating with a flat background color under accenting fleck colors. This coating system provides an unusual decorative and camouflaging effect that is also durable, flexible, and simple to maintain and repair when needed.

Tech Specs

Mix Ratio: Ready to Spray

Coverage: Up to 125-175 sq. ft/gal depending on the substrate, particle size, color, and application method

Dry to Touch: 2 hours air dry at 70°F and 50% humidity

Dry to Light Use: Overnight. Full cure achieved in 5-7 days.

Force Dry: at 140°F in 30-60 minutes. Allow 60 minutes air dry before baking. Can be clearcoated (optional) after cooling 1 hour at shop temperature 77°F.

V.O.C. Ready to Spray - 4.03 lbs/gal or 483 max grams/liter

Application

Apply Zolatone over properly prepped and primed surface. Select the proper primer/sealer base color for the Zolatone finish color. Use a pressure pot system with a conventional or HVLP spray gun with a fluid tip of .080 -.090 inch or 2.0 -2.4 mm. Apply Zolatone in a 2 step process. Sheer coat followed by Pattern coat.



Professional Grade Products